

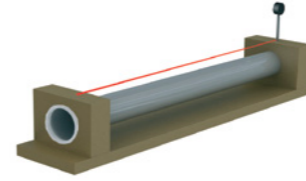
Seamless Line Pipe Dimensional Range

OD,	Wall Thickness																				
	in	mm	17.1	21.3	26.7	33.4	42.2	48.3	60.3	73	88.9	101.6	114.3	141.3	168.3	219.1	244.5	273.0	323.8	355.6	406.4
0.673	17.1																				
0.838	21.3																				
1.051	26.7																				
1.314	33.4																				
1.661	42.2																				
1.902	48.3																				
2.374	60.3																				
2.874	73																				
3.500	88.9																				
4.000	101.6																				
4.500	114.3																				
5.562	141.3																				
6.625	168.3																				
8.625	219.1																				
9.625	244.5																				
10.748	273.0																				
12.748	323.8																				
14.000	355.6																				
16.000	406.4																				

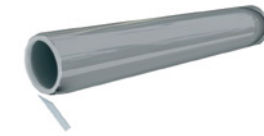
- Cold drawn
 - Hot rolled

Seamless Line Pipe Finishing Process

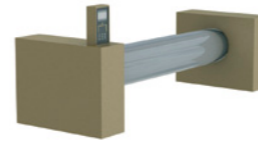
1. Geometrics inspection



2. Beveling



3. Hydrostatic testing



4. Magnetic-fluoroscopic flaw inspection of pipe ends



5. Ultrasonic inspection



6. Coating application (on Customer's request)



7. Marking, packing, storage

